

# Human C-Reactive Protein (CRP) Protein, His Tag

Catalog # CRP-H5226



BIOSYSTEMS  
**Acro**  
Surprise Inside!

## Synonym

CRP,C-reactive Protein

## Source

Human C-Reactive Protein, His Tag(CRP-H5226) is expressed from human 293 cells (HEK293). It contains AA Gln 19 - Pro 224 (Accession # [NP\\_000558.2](#)).

Predicted N-terminus: Gln 19

## Molecular Characterization

CRP(Gln 19 - Pro 224)  
NP\_000558.2

Poly-his

This protein carries a polyhistidine tag at the C-terminus.

The protein has a calculated MW of 23.9 kDa. The protein migrates as 26 kDa under reducing (R) condition (SDS-PAGE).

## Endotoxin

Less than 1.0 EU per µg by the LAL method / rFC method.

## Purity

>95% as determined by SDS-PAGE.

## Formulation

Lyophilized from 0.22 µm filtered solution in Tris-NaCl buffer pH8.0 with trehalose as protectant.

Contact us for customized product form or formulation.

## Reconstitution

Please see Certificate of Analysis for specific instructions.

*For best performance, we strongly recommend you to follow the reconstitution protocol provided in the CoA.*

## Storage

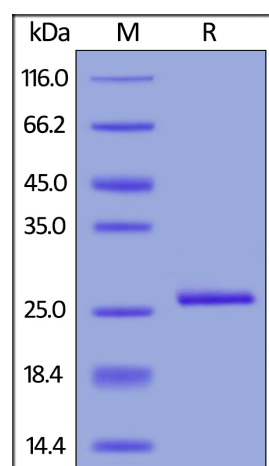
For long term storage, the product should be stored at lyophilized state at -20°C or lower.

*Please avoid repeated freeze-thaw cycles.*

This product is stable after storage at:

- -20°C to -70°C for 12 months in lyophilized state;
- -70°C for 3 months under sterile conditions after reconstitution.

## SDS-PAGE



Human C-Reactive Protein, His Tag on SDS-PAGE under reducing (R) condition. The gel was stained with Coomassie Blue. The purity of the protein is greater than 95%.

## Background

C-reactive protein (CRP) is a member of the pentraxin family of proteins that are characterized by a cyclic pentameric structure. Human CRP gene encodes a 224 amino acids precursor. The mature human CRP protein has 206 amino acids that are noncovalently linked to form the pentamer. Human CRP shares 71% and 64% amino acid sequence homology with mouse and rat respectively. CRP, synthesized by hepatocytes, is a major acute phase serum protein in human. IL6, IL1 and glucocorticoids are the major inducer of the CRP gene. The physiological role of CRP is to bind to phosphocholine expressed on the surface of dead or dying cells

Discounts, Gifts,  
and more!



➤ [www.acrobiosystems.com](http://www.acrobiosystems.com)

4/18/2025

## Human C-Reactive Protein (CRP) Protein, His Tag

Catalog # CRP-H5226



(and some types of bacteria) in order to activate the complement system. CRP binds to phosphocholine on microbes and damaged cells and enhances phagocytosis by macrophages. Thus, CRP participates in the clearance of necrotic and apoptotic cells. CRP rises up to 50,000-fold in acute inflammation, such as infection. It rises above normal limits within 6 hours, and peaks at 48 hours. Its half-life is constant, and therefore its level is mainly determined by the rate of production. It has been shown that high levels of CRP in humans is associated with an increased risk of cardiovascular diseases.

Discounts, Gifts,  
and more!



➤ [www.acrobiosystems.com](http://www.acrobiosystems.com)

4/18/2025