

Background

Recombinant Monoclonal Anti-PSMA Antibody, Rabbit (9A2) is a PSMA primary antibody for IHC application. PSMA is transmembrane glycoprotein belonging to the M28 peptidase family. The protein acts as a glutamate carboxypeptidase on different alternative substrates, including the nutrient folate and the neuropeptide N-acetyl-l-aspartyl-l-glutamate and is expressed in a number of tissues such as prostate, central and peripheral nervous system and kidney.

Key parameter

| | |
|------------------|-----------------------|
| Host Species | Rabbit |
| Isotype | IgG |
| Clone | 9A2 |
| Application | IHC |
| Property | 1: 1000 |
| State | Liquid |
| Positive Control | Human Prostate Tissue |
| Clonality | Monoclonal |
| Research Field | Cancer Drug Targets |
| Source | Rabbit |
| Synonym | PSMA |

Experiment Protocol

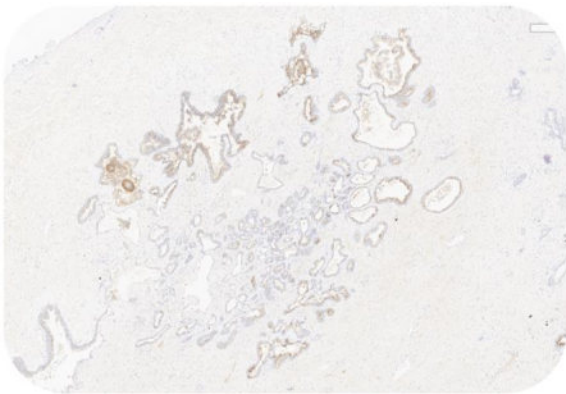
LEICA Experiment Protocol(Manual)

Storage

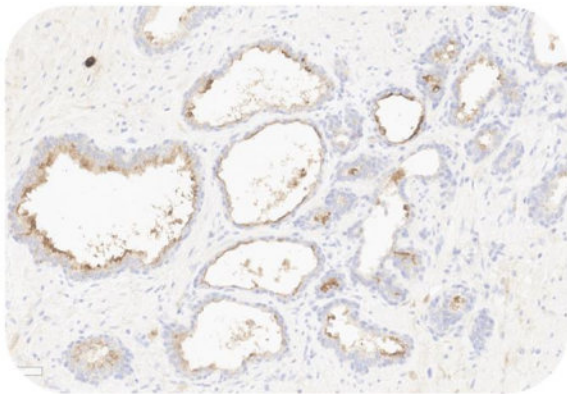
Shipped at 4°C. Store at +4°C short term (1-2 weeks). Upon delivery aliquot. Store at -20°C long term. Avoid freeze / thaw cycle. The shelf life is 30 days from the date of opening.

Typical Data

Control Sample



Immunohistochemistry (Formalin/PFA-fixed paraffin-embedded sections) -Recombinant Monoclonal Anti-PSMA Antibody, Rabbit (9A2) (HGS-S317)
Human Prostate Tissue, 4X



Immunohistochemistry (Formalin/PFA-fixed paraffin-embedded sections) -Recombinant Monoclonal Anti-PSMA Antibody, Rabbit (9A2) (HGS-S317)
Human Prostate Tissue, 4X

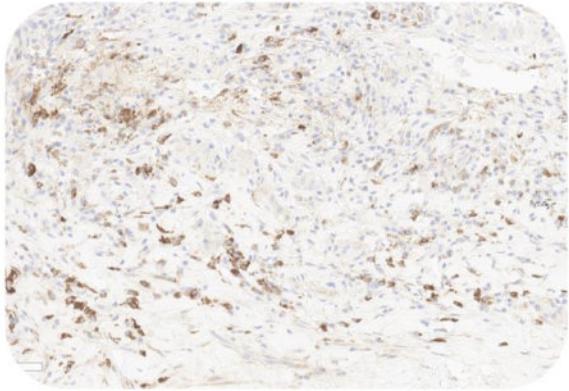
Immunohistochemical analysis of paraffin embedded Human Prostate Tissue labelled with HGS-S317 at 1/1000 dilution.
Perform heat mediated antigen retrieval with Tris/EDTA buffer pH 9.0 before commencing with IHC staining protocol.

Discounts, Gifts,
and more!

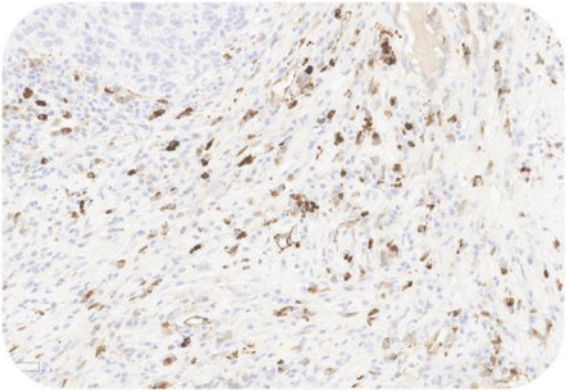




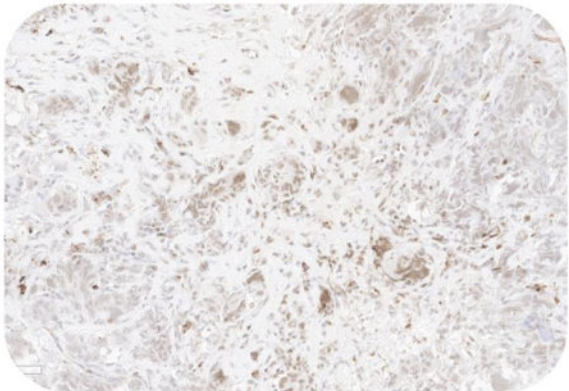
Cancer Sample



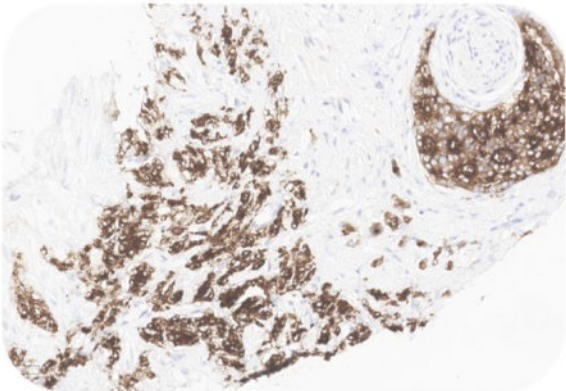
Immunohistochemistry (Formalin/PFA-fixed paraffin-embedded sections) -Recombinant Monoclonal Anti-PSMA Antibody, Rabbit (9A2) (HGS-S317)
Human Lung Cancer, 20X



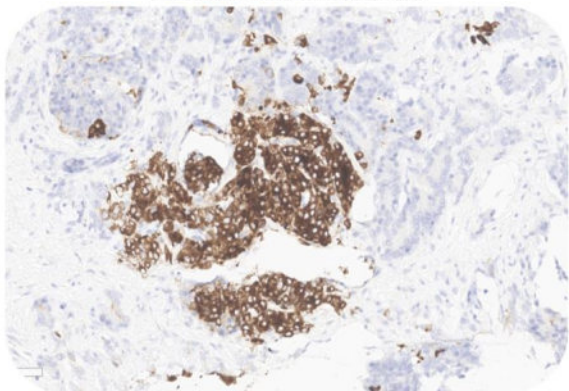
Immunohistochemistry (Formalin/PFA-fixed paraffin-embedded sections) -Recombinant Monoclonal Anti-PSMA Antibody, Rabbit (9A2) (HGS-S317)
Human Liver Cancer, 20X



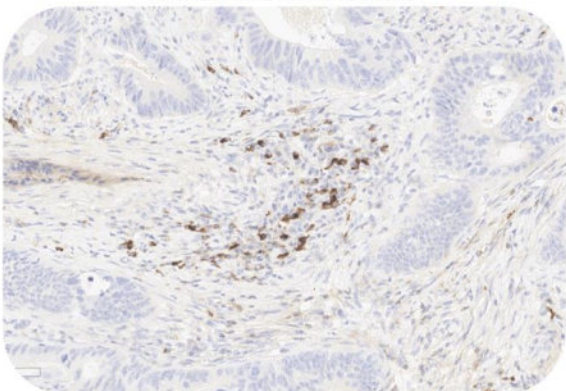
Immunohistochemistry (Formalin/PFA-fixed paraffin-embedded sections) -Recombinant Monoclonal Anti-PSMA Antibody, Rabbit (9A2) (HGS-S317)
Human Ovarian Cancer, 20X



Immunohistochemistry (Formalin/PFA-fixed paraffin-embedded sections) -Recombinant Monoclonal Anti-PSMA Antibody, Rabbit (9A2) (HGS-S317)
Human Prostate cancer, 20X



Immunohistochemistry (Formalin/PFA-fixed paraffin-embedded sections) -Recombinant Monoclonal Anti-PSMA Antibody, Rabbit (9A2) (HGS-S317)
Human Prostate cancer, 20X



Immunohistochemistry (Formalin/PFA-fixed paraffin-embedded sections) -Recombinant Monoclonal Anti-PSMA Antibody, Rabbit (9A2) (HGS-S317)
Human Colorectal Cancer, 20X

Immunohistochemical analysis of paraffin embedded human cancer tissue labelled with HGS-S317 at 1/1000 dilution.
Perform heat mediated antigen retrieval with Tris/EDTA buffer pH 9.0 before commencing with IHC staining protocol.

